



*Quality You Can See*



*INFRA RED INSPECTION SYSTEM*

# INNOVATION *That Guarantees Customer Satisfaction...*

# IRIS

5000

IRIS 5000 detects microscopic voids in real time during the continuous casting of copper bar. This ensures that your customer does not find a void in the form of a wire break.

The IRIS 5000 ensuring quality while maximizing product output.

## SCR's IRIS 5000 InfraRed Inspection System

### Overview

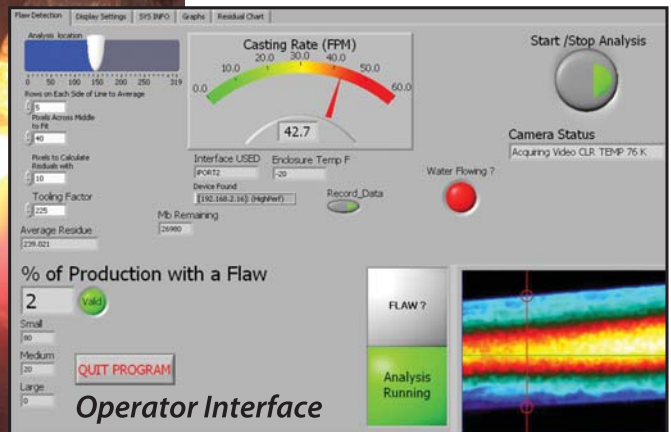
The IRIS 5000, patent pending technology is easily integrated into your casting process. Through a visual monitoring system it determines frequency and size of voids in cast bar.

What is the value of a satisfied customer..... **PRICELESS!**

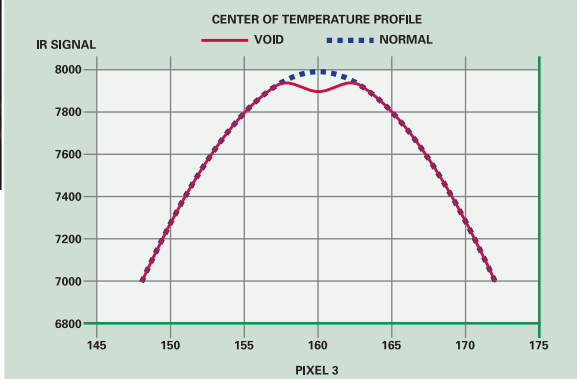
100% inspection providing tangible and intangible benefits to both you and your customer.

### Features

- 1 100% Inspection in Real Time
- 2 Easily Integrated
- 3 User Friendly Interface



### Shape of profile determines presence/absence of voids



SCR Technologies  
One Southwire Drive  
Carrollton, Georgia 30119 USA  
Phone: 1.770.832.4108  
Fax: 1.770.838.6600

For more information and pricing contact  
**SCR Technologies at [www.southwire.com](http://www.southwire.com)**